

DIMENSIONS FOR SCREWED & SOCKET WELD FITTINGS.

THREAD ENGAGEMENTS & SOCKET DEPTHS

DERIVATION OF DIMENSIONS

THE DERIVATION REFERENCE CODE SHOWN ON THE RIGHT HAND BORDER OF SHEET 2 OF 2 IS AS FOLLOWS :

<u>CODE</u>	<u>DIMENSIONS REFERENCE</u>
1	* ANSI B.16.11 - 1973
2	LADISH CAT. NO. 55 - PG. 170-171
3	GRINNEL CAT. NO. PF 72 - PG. 70
4	VOGT. CAT. F11 - PG. 168
5	* ANSI B.2.1 - 1968

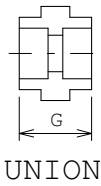
NOTE :

THE DIMENSIONS SHOWN IN TABLE ON SHEET 2 ARE TO BE USED FOR MANUAL PIPING LAYOUTS AND ARE THE SAME DIMENSIONS CONTAINED WITHIN THE AUTOMATED DESIGN DEPARTMENT APD PROGRAMS. THE VENDORS' NAMES UNDER "DIMENSIONAL REFERENCE" (ABOVE) HAVE BEEN USED ONLY TO BE ESTABLISH CONSISTENT DIMENSIONS FOR ALL PIPING DRAWINGS. THESE DIMENSIONS ARE THE MOST LIBERAL AND ANY OTHER VENDOR' S FITTINGS SELECTED FOR PURCHASE WILL ALLOW FOR SUFFICIENT SPACE FOR PROPER FITTING MAKE-UP. THESE VENDORS' NAMES IN NO WAY SHOULD BE USED BY PURCHASING TO DETERMINE VENDOR SELECTION FOR ANY PROJECT.

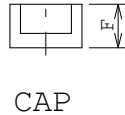
* NOTE : DATA IS EXTRACTED FROM "PUBLICATIONS"

ID. NO.	ISSUE	SHEET	DOC.NO.
	2	1 of 2	BN-DS-C50

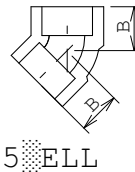
ALL DIMENSIONS WITHIN THE TABLES ARE IN MILLIMETERS



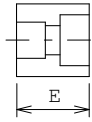
UNION



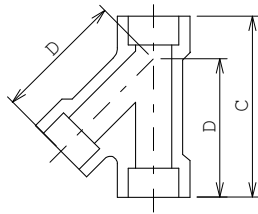
CAP



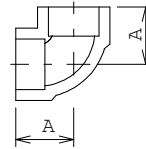
45° ELL



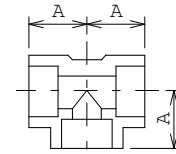
CPLG. &
RED. CPLG.



LATERAL



90° ELL



TEE &
RED. TEE

REFERENCE CODE

2000# SCREWED

SIZE	1/4	3/8	1/2	3/4	1	1-1/4	1-1/2	2	2-1/2	3	4	
A	22	25	29	35	38	44	51	60	76	86	104	1
B	19	19	22	25	29	35	35	44	54	64	79	1

3000# SCREWED & SOCKET WELD

SIZE	1/4	3/8	1/2	3/4	1	1-1/4	1-1/2	2	2-1/2	3	4	
A	25	29	35	38	44	51	60	64	83	95	114	1
B	19	22	25	29	35	35	44	44	54	64	79	1
C	70	76	92	105	127	140	165	229				2
D	48	54	67	76	92	102	121	175				2
E	35	38	48	51	60	67	79	86	92	108	121	1
F	25	25	32	38	41	44	44	48	60	67	70	1
G			60	64	70	76	83	89	98	114		3

6000# SCREWED & SOCKET WELD

SIZE	1/4	3/8	1/2	3/4	1	1-1/4	1-1/2	2	2-1/2	3	4	
A	29	35	38	44	51	60	64	83	95	108	114	1
B	22	25	29	35	35	44	44	54	64	79	79	1
C		92	105	127	140	165	229	232				2
D		67	76	92	102	121	175	178				2
E	35	38	48	51	60	67	79	86	92	108	121	1
F	29	29	35	38	44	48	48	51	64	70	76	1
G			73	86	92	98	111	117				4

THREAD ENGAGEMENT & SOCKET DEPTH

THD	13	13	16	16	19	19	19	19	25	29	29	5
SOC	10	10	10	13	13	13	13	16	16	16	16	1

ID. NO.

ISSUE

SHEET

DOC.NO.

2

2 of 2

BN-DS-C50