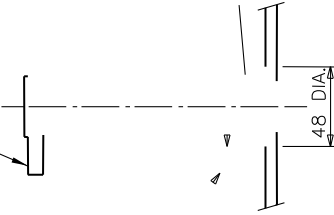


L.W.N. FLANGE

L.W.N. FLAN



1/2" DIA. ALL RATINGS

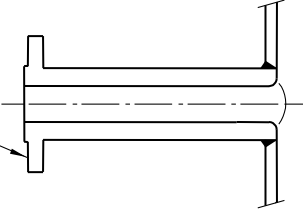
3/4" DIA. RATING 150#

NOZZLES < 1 1/2"

3/4" DIA. RATING ≥ 300#

1" DIA. RATING ≥ 150#

L.W.N. FLANGE



T.L.

0.25 DIA.

R=50

50 TACK WELD ON 100 CENTERS BOTH SIDES

ANTI SWIRL BAFFLES
UP TO 4000 DIA. 4XREQ'D.
ABOVE 4000 DIA. 6XREQ'D.

THICKNESS
4mm + 2x CORR. ALLOW.

PER DRAWING

1xDIA.

1xDIA.

1xDIA.

1xDIA.

1xDIA.

3x0.5DIA.

2x0.5DIA.

2x0.5DIA.

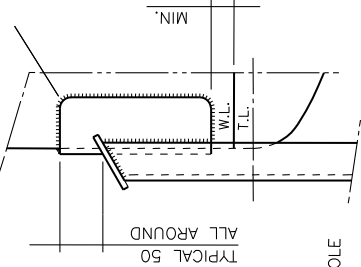
2x0.5DIA.

2x0.5DIA.

2x0.5DIA.

VORTEX BREAKERS

BACK-UP PLATES FOR LEGS TO HAVE SAME THICKNESS AND MATERIAL AS LOCAL VESSEL WALL USE BACK-UP PLATES ONLY IF REQUESTED ON VESSEL DRAWING.



CLOSED WITH PLATE, 5mm THICK

APPROX. 0.1 x LENGTH BETWEEN TANGENT LINES WITH MINIMUM 250mm AND MAXIMUM 450mm

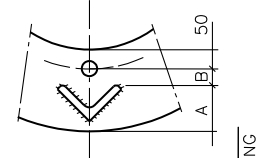
NOTCH IN LEG TO CLEAR WELDSEAM

25mm DIA. HOLE

DIA. INDICATED ON VESSEL DRAWING

LEGS FOR VERTICAL VESSELS

ANGLE SIZE	A	B
60 X 60	60	30
65 X 65	65	30
70 X 70	65	25
75 X 75	70	25
80 X 80	75	20
90 X 90	80	15
100 X 100	90	10
110 X 110	95	0
120 X 120	100	0
130 X 130	110	0
140 X 140	120	0
150 X 150	125	0



LADDER RUNGS

L.W.N. FLANGE



WELD LINE

TANGENT LINE "DATUM"

MINIMUM 2xT

SKIRT VENT

4" PIPE SCH.40

L.R. 90° ELBOW

I.D. SLEEVE EQUAL TO O.D. OF PIPE + APPROX.13mm CLEARANCE.

ONE ACCESS HOLE FOR COLUMNS UP TO 2500mm DIA. TWO ACCESS HOLES FOR COLUMNS 2500mm DIA. AND OVER.

SKIRT THICKNESS Ts=

500 I.D.

150

1000

1500

1500

1500

1500

1500

1500

1500

1500

1500

1500

1500

1500

1500

1500

1500

1500

1500

1500

1500

1500

1500

1500

1500

1500

1500

1500

1500

1500

1500

TYPICAL CONSTRUCTION DETAILS FOR VESSELS

ISSUE 8

DATE 1 DEC'00

SHEET 1 OF 1

BN-DS-A 2